



布袋戲 學習單(中高級)

Glove Puppetry Learning Worksheet for Intermediate and Above

臺灣布袋戲是一種貼近生活的表演藝術，利用小小的戲
Táiwān Bùdàixì shì yì zhǒng tiējīn shēnghuó de biǎoyǎn yìshù liyòng xiǎoxiǎo de xì-

偶演繹劍俠故事。早期布袋戲是為了謝神而表演，後來
ǒu yǎnyì jiànxiá gùshì zǎoqī bùdàixì shì wèile xièshén ér biǎoyǎn hòulái

搬上電視造成轟動，也出現了精美華麗的大型戲偶。傳
bānshàng diànshì zàochéng hōngdòng yě chūxiànle jīngměi huá lì de dàxíng xì'ǒu chuán-

統布袋戲說台語，操偶師用聲音表現不同角色，還能做
tǒng bùdàixì shuō táiǔ cāo'ǒushī yòng shēngyīn biǎoxiàn bùtóng juésè hái néng zuò

出撐傘、梳頭髮、轉盤子的細緻動作。它展現了豐富的
chū chēng sǎn shū tóufǎ zhuǎn pánzi de xìzhì dòngzuò tā zhǎnxiànle fēngfù de

文化內涵，是臺灣文化的重要象徵。
wénhuà nèihán shì Táiwān wénhuà de zhòngyào xiàngzhēng

Taiwanese glove puppetry is a performing art deeply rooted in everyday life, using small puppets to bring chivalrous stories to the stage. In its early days, it was performed as a way to thank the gods, but it later became a cultural phenomenon when it was broadcast on television. Over time, larger and more intricately decorated puppets emerged. Traditional performances are conducted in Taiwanese, with the puppeteer skillfully using their voice to portray a variety of characters. They can also perform intricate actions, such as opening an umbrella, combing hair, and spinning plates. Glove puppetry carries profound cultural significance and remains a cherished symbol of Taiwanese heritage.

彩樓

Cǎilóu



1 布袋戲的角色：連連看

Bùdàixì de juésè liánliánkàn

Glove Puppetry Characters: Match the Characters



● 生
Shēng

● 旦
Dàn

● 丑
Chǒu

● 雜
Zá

● 淨
Jìng

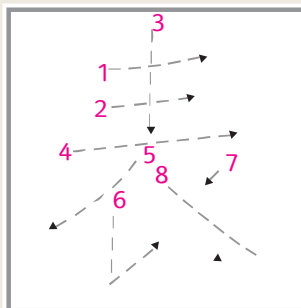


2 讀一讀、寫一寫

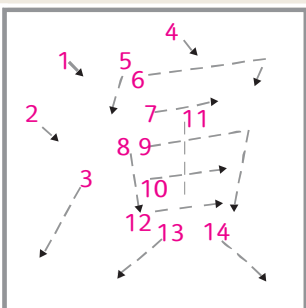
Dú yì dú xiě yì xiě

Read and Write

performing

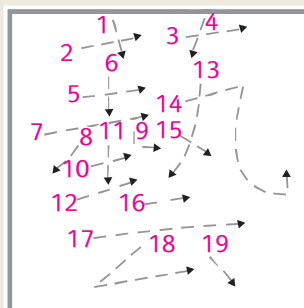


biǎo

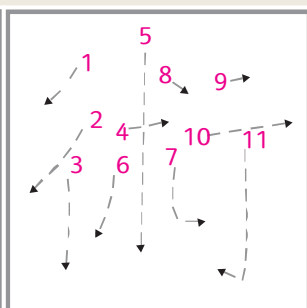


yǎn

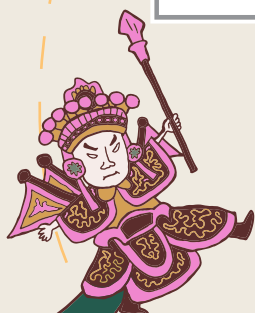
arts



yì



shù



3 演出時，戲偶上臺的位置，是在彩樓的哪兩個字下方？戲偶上台時唸的是什麼？

Yǎnchū shí xì'ǒu shàngtái de wèizhì shì zài cǎilóu de nǎ liǎng ge zì xiàfāng xì'ǒu

上台時唸的是什麼？

shàngtái shí niàn de shì shénme

Two Chinese characters are above the entrance when puppets step onto the stage. What are those two words? What do the puppets say when they go on stage?



4 畫出操作戲偶的手勢： Draw the positions of your fingers when controlling the puppet.

Huàchū cāozuò xì'ǒu de shǒushi



5 請畫出布袋戲演出時要演奏的其中三種樂器，並寫上中文名稱或它們的發音。

Qǐng huàchū bùdài xì yǎnchū shí yào yǎnzòu de qízhōng sān zhǒng yuèqì bìng xiěshàng zhōngwén

名稱或它們的發音。

míngchēng huò tāmen de fāyīn

Draw three musical instruments played during the puppet show, and write the Chinese characters or the pronunciation of the instruments.



6 戲偶臉上畫的顏色有不同的含意，例如：紅色代表忠勇。

Xì'ǒu liǎn shàng huà de yánsè yǒu bù tóng de hányì lǐrú hóngsè dài biǎo zhōngyǒng

你今天畫了什麼角色的戲偶？它的臉上你畫了什麼顏色？

Nǐ jīntiān huà le shénme juésè de xì'ǒu Tā de liǎn shàng nǐ huà le shénme yánsè

代表什麼含意呢？

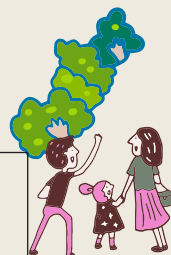
Dài biǎo shénme hányì ne

The colors on the puppets' faces have different meanings. For example, red represents loyalty and courage. Which character did you paint today? What color did you use? What does it mean?

7 你今天學到了什麼布袋戲的知識或技能？

Nǐ jīntiān xué dào le shén me bù dài xì de zhī shì huò jī néng?

What knowledge and skill have you learned from Taiwanese glove puppetry today?



題目設計：陳玉明老師、林銘文老師

Copyright© 2024



宜蘭傳藝園區 | 全聯善美的文化藝術基金會